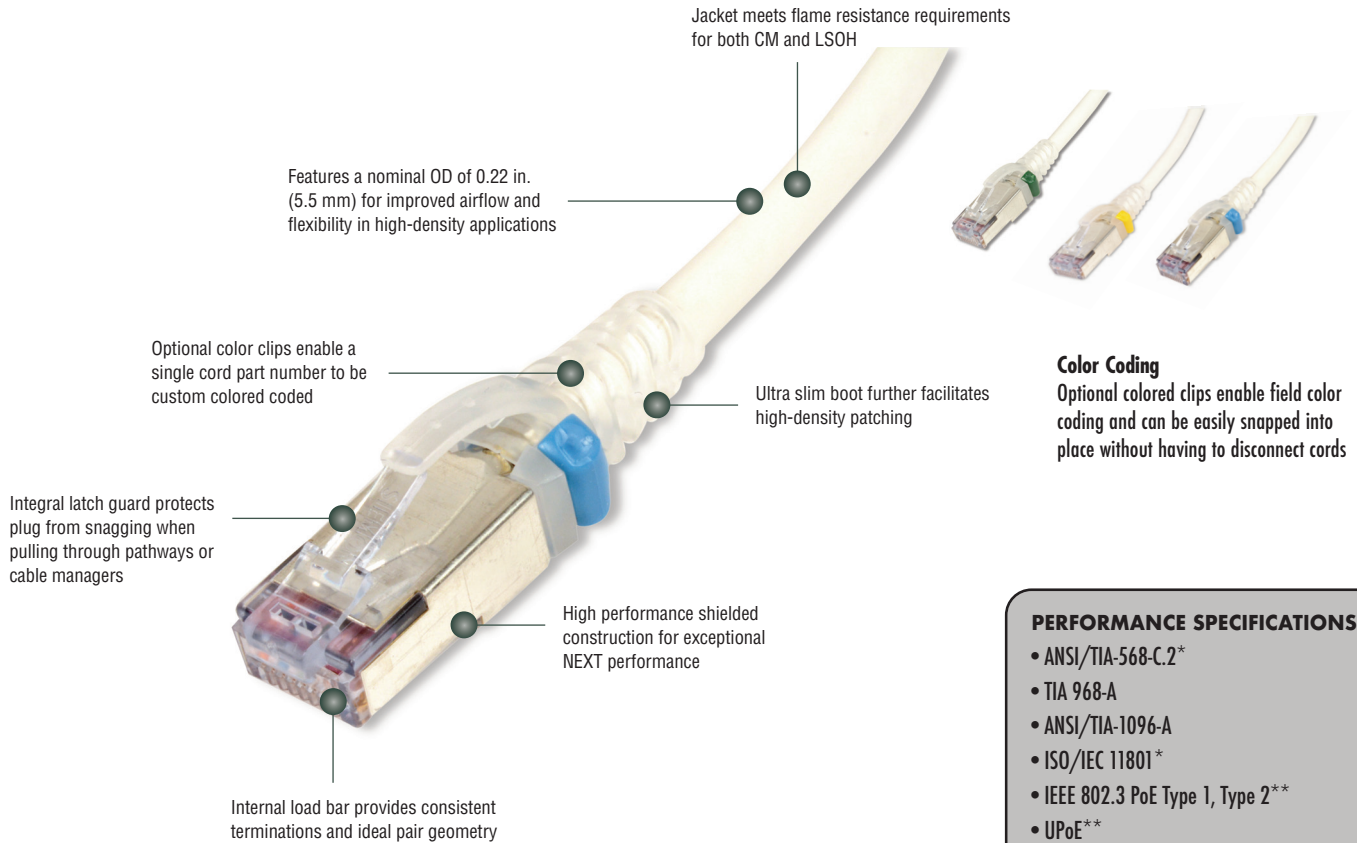


SkinnyPatch™ 6A Shielded Modular Cords – US

Siemon's SkinnyPatch 6A Shielded Modular Cords deliver superior Category 6A performance with a reduced cable diameter for improved airflow and increased flexibility in high-density patching areas. The cord's smaller 28 AWG stranded copper construction offers a significantly tighter bend radius for easier cable routing and enhanced cable management, providing pathway space savings in racks and cabinets while facilitating moves, adds and changes in tight spaces. Confirmed by Intertek, an independent third party test lab, SkinnyPatch 6A Shielded Modular Cords exceed ANSI/TIA-568-C.2 and ISO/IEC 11801 Edition 2.2 performance standards. These cords also feature Siemon's high performance shielded S/FTP construction for exceptional NEXT performance and innovative 360-degree crimp for excellent plug-to-cable strain relief.



Color Coding

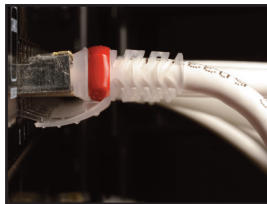
Optional colored clips enable field color coding and can be easily snapped into place without having to disconnect cords

PERFORMANCE SPECIFICATIONS

- ANSI/TIA-568-C.2*
- TIA 968-A
- ANSI/TIA-1096-A
- ISO/IEC 11801*
- IEEE 802.3 PoE Type 1, Type 2**
- UPoE**
- Power over HDBASE-T (PoH) **
- IEC 60603-7
- cUL US Listed
- IEC 60332-1, 60754, 61034

*Patch cord length is limited to 8 meters for a maximum channel length of 98 meters.

** See table for recommended maximum bundle size



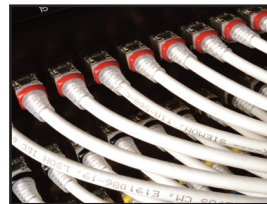
Excellent Bend Relief

Boot and integrated strain relief ensures minimum bend radius for category 6A performance



Diameter

Smaller diameter cable significantly reduces bundle and pathway fill for space savings.



Improved Airflow

Offers improved airflow, accessibility and cable management in high-density applications.

PERFORMANCE SPECIFICATIONS*

CORD ASSEMBLY	
Compatibility	Category 6A, 6 and 5e RJ 45 outlets
Wiring	T568A/B as specified by part #
Marking	P/N, length, performance level
Operating Temperature	-20 to 75 °C (-4 to 167 °F)
Remote Powering	PoE Type 1, Type 2, UPoE, PoH
Green Features	RoHS, lead-free, halogen-free, PVC free
Plastic Materials	Flame retardant thermoplastic
CABLE	
Wire Size (Nominal)	28 AWG 7x36 Stranded bare copper
Construction	S/FTP
Cable O.D. (Nominal)	5.5 mm (0.22 in.)
Jacket Type	CM/LSOH
Bend Radius	22 mm (0.87 in.)
Attenuation De-Rating Factor	1.9

PLUG	
Number of Plug Insertion Cycles	2500
Min. Plug Retention Force	50N (11.24 lbf)
Contact Resistance	20 mΩ
Input to Output DC Resistance	200 mΩ (signal conductors) 100 mΩ (shield)
Insulation Resistance	500 MΩ
Min. Dielectric Withstand Voltage	1000 V DC or AC peak (contact to contact) 1500 V DC or AC peak (contact to shield)
Current Rating @ 25 °C (77 °F)	1.5 A
Flammability Rating	UL 94 - V0
Contact Materials	Copper alloy with contact plating of 50 microinches gold or equivalent

MAXIMUM RECOMMENDED BUNDLE SIZE		
Application	Current per Pair (mA)	28 AWG Patch Cords
Type 1 PoE (15.4 W)	350	48
Type 2 PoE (30 W)	600	48
Type 3 PoE (60 W)	600	24
Type 4 PoE (90 W)	960	24
PoH (100 W)	1000	24

Ordering Information:

SP6A-S(XX)-(XX)(X). SkinnyPatch Category 6A double-ended, 4-pair, 28 AWG S/FTP stranded modular patch cord, T568A/B, clear boot.

Length

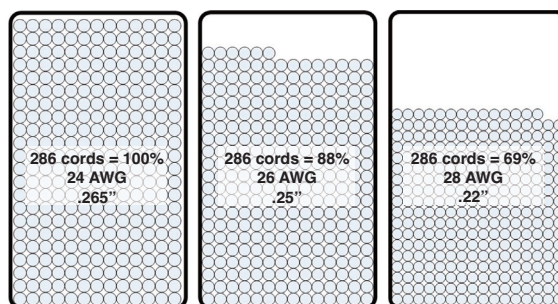
03 = 0.9m (3 ft.)
05 = 1.5m (5 ft.)
07 = 2.1m (7 ft.)
10 = 3.1m (10 ft.)
15 = 4.6m (15 ft.)
20 = 6.1m (20 ft.)

Bulk Package

Blank = Non Bulk
B = Bulk (Quantity 100)

Jacket Color

01 = Black 04 = Gray 07 = Green
02 = White 05 = Yellow 08 = Violet
03 = Red 06 = Blue 09 = Orange



Fill Comparison: Category 6A Cords in a 6 x 3.5 cable manager

CLIP-(XX). Color coding clip, bag of 25

Clip Color

01 = Black 04 = Gray 07 = Green
02 = White 05 = Yellow 08 = Violet
03 = Red 06 = Blue 09 = Orange



24 AWG

26 AWG

28 AWG



Construction

Smaller 28 AWG construction results in a smaller bend radius for easier routing in tight spaces.

Because we continuously improve our products, Siemon reserves the right to change specifications and availability without prior notice.

Worldwide Headquarters
North America
Watertown, CT USA
Phone (1) 860 945 4200

Regional Headquarters
Europe Russia Africa
Chertsey, Surrey, England
Phone (44) 0 1932 571771

Regional Headquarters
China
Shanghai, P.R. China
Phone (86) 215385 0303

Regional Headquarters
Latin America
Bogota, Colombia
Phone (571) 657 1950/51/52

Regional Headquarters
India Middle East
Dubai, United Arab Emirates
Phone (971) 4 3689743

Regional Headquarters
Asia Pacific
Sydney, Australia
Phone (61) 2 8977 7500

Siemon Interconnect Solutions
Watertown, CT USA
Phone (1) 860 945 4213 US
www.siemon.com/SIS

