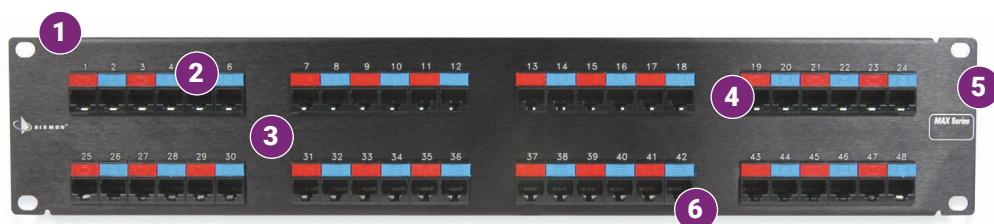


MAX® Patch Panels

Regional Availability — Global



MAX patch panels provide a flexible, high density modular termination solution for the datacenter and telecommunications room. Using the full line of UTP Z-MAX®, UltraMAX® and MAX modules (available separately), the panel can be configured for a variety of multimedia applications. Blank modules can be used to reserve ports for future capacity.



1. Standard Fit

Panels can be mounted directly to fit a standard 19 inch relay rack or cabinet.

2. Easy Identification

MAX series modules utilize Siemon's colored icons for easy identification and administration.

3. Supporting Options

Available in 16-, 24-, 48-, and 72-port configurations.

4. Bold Port Numbering

Enables quick and ready identification of outlets.

5. Panel Identification

Labeling area provided for panel designation.

6. Multimedia Capability

Mix and match many different types of connectors.



Enhanced Performance

Individual modules snap into place from front or rear of panel for added installation flexibility.



16-Port Flat Panel



24-Port Flat Panel



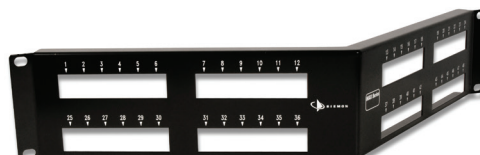
48-Port Flat Panel



72-Port Flat Panel



24-Port Angled Panel



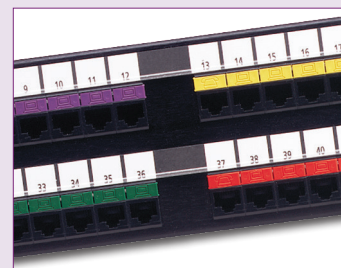
48-Port Angled Panel

Optimal Design

The MAX patch panels have been designed with the installer in mind. The flat panels are available in 16-, 24-, 48- and 72-port configurations while angled panels are available in 24- and 48-ports. They allow users to easily optimize network layouts to best support their requirements.

Durable Construction

Each MAX patch panel is constructed from high strength steel with a scratch-resistant finish, providing a robust foundation for your critical network connections.



Distinct Labeling

Removable designation labels can be laser printed and enable proper circuit identification for each port.



Flexible Cable Management

MAX patch panels are available with removable rear cable managers, allowing users to easily control their cabling and maintain optimum performance.

Ordering Information

MAX Patch Panels

Part Number	Description
MX-PNL-16	16-Port Flat Panel, 1 RMS
MX-PNL-24	24-Port Flat Panel, 1 RMS
MX-PNL-48	48-Port Flat Panel, 2 RMS
MX-PNL-72	72-Port Flat Panel, 2 RMS
MX-PNLA-24	24-Port Angled Panel, 1 RMS
MX-PNLA-48	48-Port Angled Panel, 2 RMS

Note: Angled MAX panels are not recommended for use with RS3 rack series. Use the RS series racks. 1 RMS = 44.5mm (1.75 in.)

S89D Brackets

The MAX S89D offers an economical solution for smaller applications while allowing for a range of different media using the full line of UltraMAX and MAX modules.

Part Number	Description
MX-89D-12	S89D Bracket: 12-Port MAX Panel Mounted on an 89D Bracket

Labeling Accessories

Part Number	Description
MX-PNL-LBL4*	10 Sheets of Laser Printable Labels for 16-Port MAX Panel
MX-PNL-LBL6*	10 Sheets of Laser Printable Labels for 24- and 48-Port MAX Panel

*Visit our web site or contact our Technical Support Department for labeling software.

Reusable Hook and Loop Cable Managers

VCM - (XX or XXX) - (XX) - 01

QUANTITY	LENGTH
25 = 25	06 = 152mm (6 in.), Holds 51mm (2 in.) Diameter Cable Bundle
250 = 250	12 = 305mm (12 in.), Holds 102mm (4 in.) Diameter Cable Bundle
	18 = 457mm (18 in.), Holds 153mm (6 in.) Diameter Cable Bundle

For related product information request Spec Sheet(s):

[MAX 5e Module Punch-down \(PROD-SS-MPD\)](#)

[MAX 6 Modules \(PROD-SS-MX6\)](#)

Because we continuously improve our products, Siemon reserves the right to change specifications and availability without prior notice. MAX®, UltraMAX®, Z-MAX® and TERA® are trademarks of Siemon.

North America
P: (1) 860 945 4200

Asia Pacific
P: (61) 2 8977 7500

Latin America
P: (571) 657 1950/51/52

Europe
P: (44) 0 1932 571771

China
P: (86) 215385 0303

India, Middle East & Africa
P: (971) 4 3689743

Siemon Interconnect Solutions
P: (1) 860 945 4213
www.siemon.com/SIS

Mexico
P: (521) 556 387 7708/09/10



S89D Bracket